

# Google Play

## Controls & Settings guide

Google Play restrictions allow you to set the maturity level of apps and set a PIN code for purchases.



# What do I need?

A Google Play account (Email and Password).

## Restrictions you can apply



Apps Access



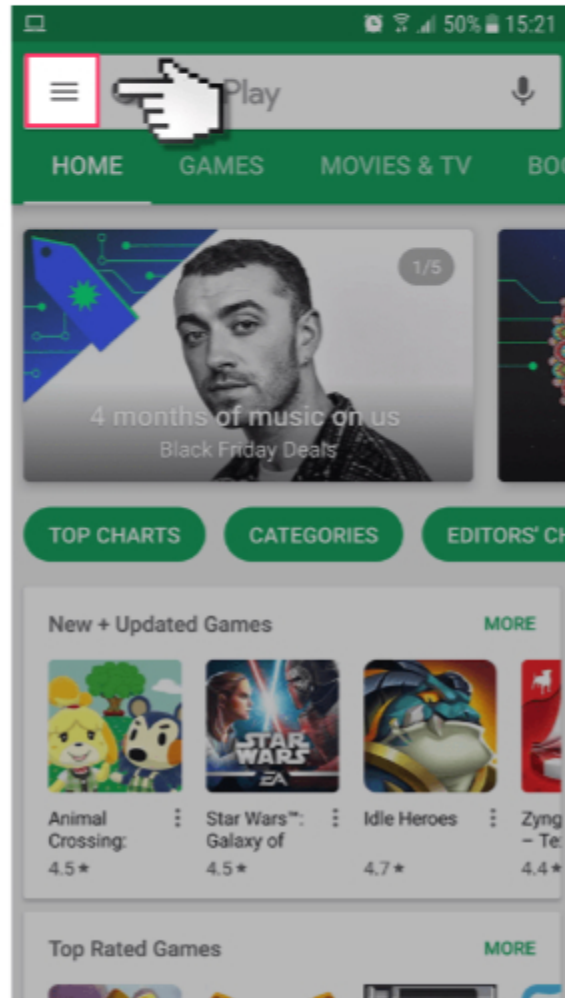
In App purchasing



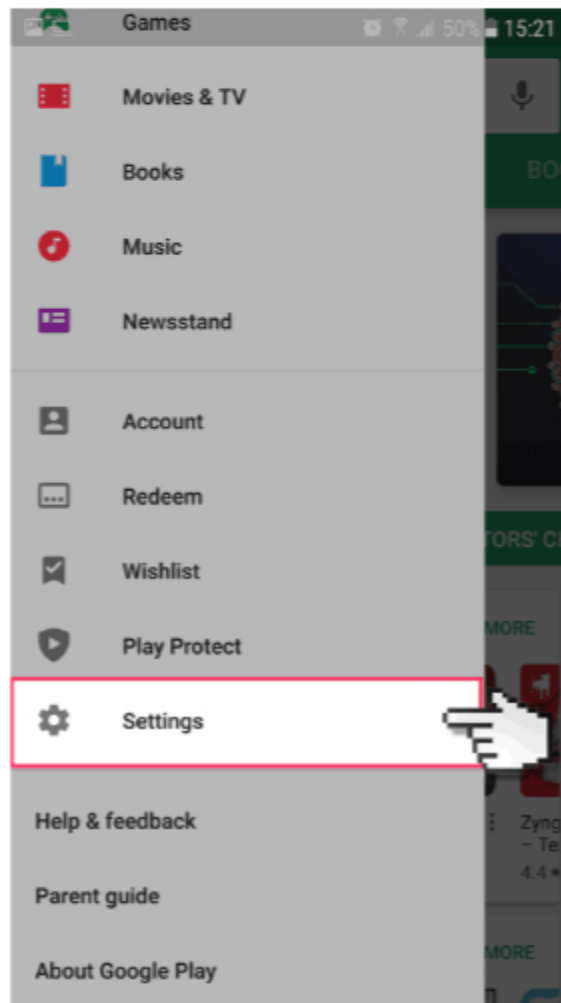
Online games

# Step by Step instructions

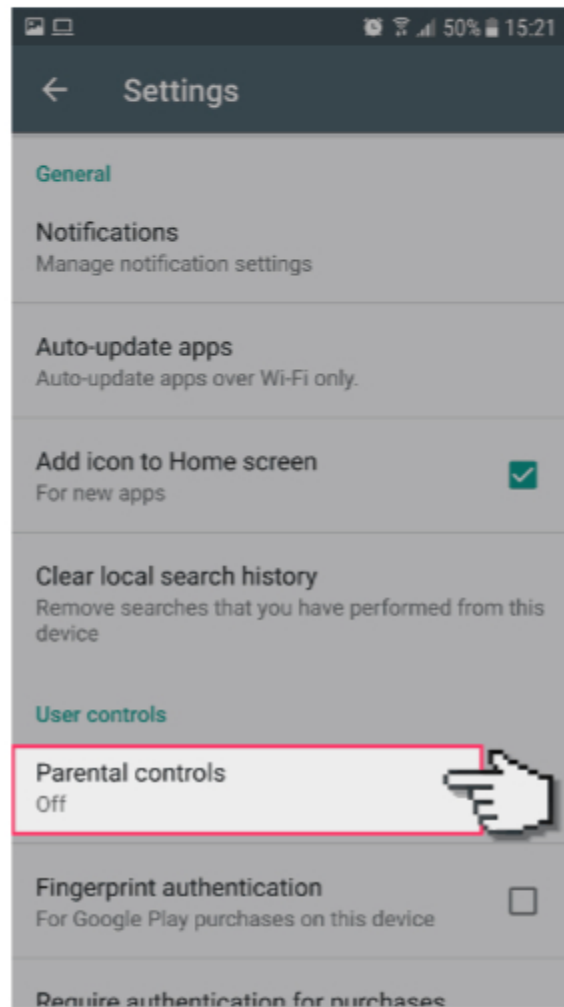
1. Go on to the Google Play app on your device. And select the three lines icon to open up the settings.



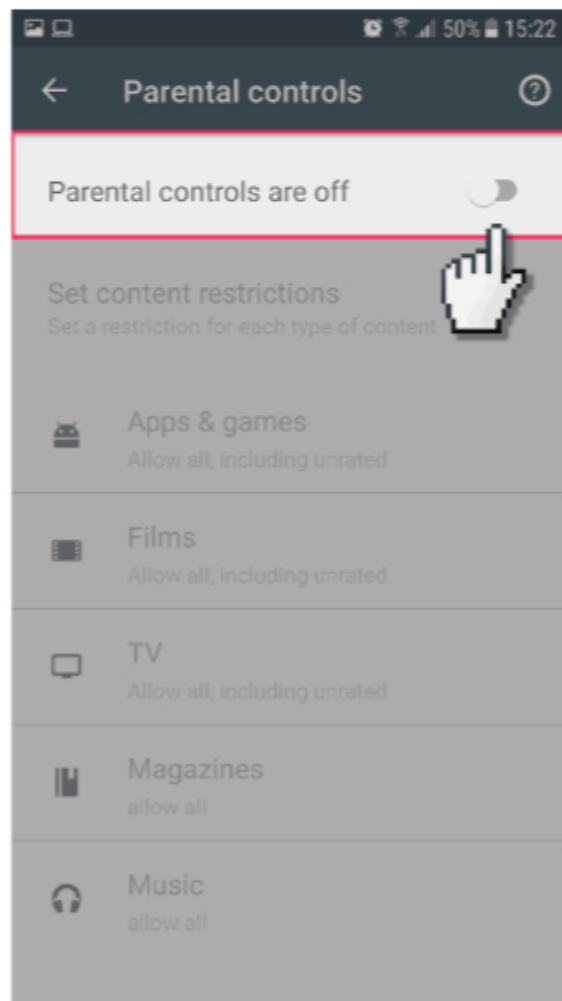
## 2. Scroll down and select 'Settings'.



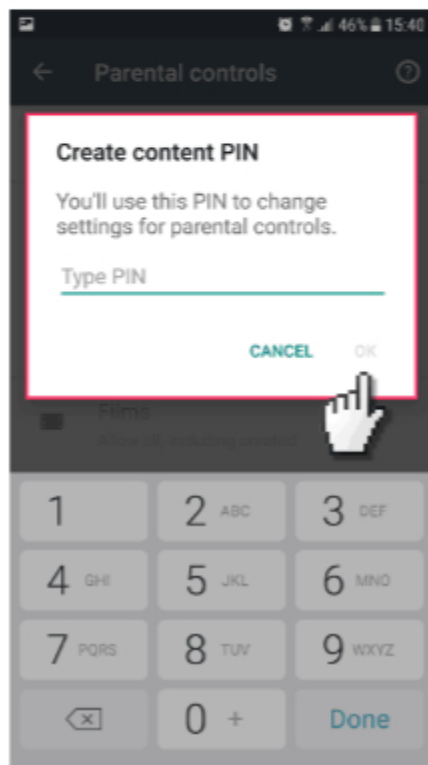
### 3. Select 'Parental Controls'.



#### 4. Switch the parental controls switch to 'on'.



5. It will ask you to create a 4 digit PIN which will be needed to change the settings in the future. It will ask you to enter this twice for confirmation.



6. You then have the option to add restrictions to all the different types of content depending on the age of the child.

